

# AUTOMATION & DIGITAL SOLUTIONS

Analyse ◉ Design ◉ Validate ◉ Optimize

[www.preciseindsolpvtltd.com](http://www.preciseindsolpvtltd.com)



# ABOUT OUR COMPANY

---

Established in 2010, we “Precise Industrial Solutions”, have emerged as one of leading name in Industrial Automation Solutions. Precise is technology-driven and specialists in the design, manufacture and commissioning of integrated solutions incorporating Siemens Automation products. Precise integrates Digital Twin, Automation and Digital Services. This delivers a unique value proposition to explore potential opportunities by generating value through data from single asset to your whole plant.

At “Precise Industrial Solutions”, we provide innovative solutions for system integration. Our complete focus is in meeting the needs of our customer by improving efficiency, quality, flexibility and speed.



## **Smita Gadade** (Director)

---

Ms. Smita Gadade started her career in 2002 after completing her Engineering from Mumbai University. During the period 2002-10, she was working as Automation Project Manager at Schneider System House. She completed her Post Graduation in Business Management from NMIMS. After her Post Graduation, she founded Precise Industrial Solutions and working as a Technical Executive Director of the Company w.e.f. June 1, 2010.



## **Ashish Sharma** (Director)

---

Mr. Ashish Sharma holds an B.E. Instrumentation degree from the University of Mumbai. During the period 2002-06, he was engaged in various roles within the Consumer Sales. From 2006-10, he worked as the Marketing Engineer responsible for sales & marketing of Automation Products at Schneider System House. Mr. Ashish Sharma is the founder of Precise Industrial Solutions and working as a Marketing Director of the Company w.e.f. June 1, 2010.

# OUR SERVICES

● ANALYZE

● DESIGN

● VALIDATE

● OPTIMIZE

03

## Digital and Factory Automation Projects .....



### FULL DESIGN, BUILD, TEST

We cover all aspects of project design from Design to Configuration and Testing. We design customized solutions that are tailored to your needs and your production process.

---



### PROCESS AUTOMATION

We provide the complete solution package for your automation, that improves the overall productivity. We have solutions for regulatory requirements like 21 CFR Part 11, EU Annex 11.

---



### SOFTWARE DEVELOPMENT

We use the Mindsphere/AWS cloud services to connect your products, plants, systems, and machines to cloud, enabling you to harness the wealth of data generated by the Internet of Things (IOT) with advanced analytics.





### **DOCUMENTATION PROCESS**

We offer a set of methodological documentation to prepare, check, verify any system. We have solutions for regulatory requirements like GAMP 5 Categories, V Model, 21 CFR Part 11, EU Annex 11.

---



### **REMOTE SITE-SERVICES**

Our experts team provide easy, flexible, convenient and secure remote access for instant automation services/maintenance in order to reduce the downtime and increase the plant efficiency.

---



### **TECHNICAL & OPERATIONAL TRAINING**

We host training sessions and providing materials to familiarize your operators on all new procedures within your plant. This helps in developing, maintaining, or improving the operational readiness of individuals or units.

# WHY US

---

“CUSTOMER’S SATISFACTION  
IS OUR KEY TO SUCCESS.”

We believe the customer is the reason for our existence and the only guarantee to our future.

We ensure highest commitment to highest standard of our deliverables. With our expert professionals we ensure compliances to be integrated in place to optimize the entire value chain, from design and production to performance.



**01**

### **ANALYSE**

Our trained professionals do the detailed evaluation of a system to identify the areas for improvements and make enhancements with our world-class product range.

**02**

### **DESIGN**

With the complex digital products these days, our team's approach is more comprehensive in adapting latest technology, in order to build a better design structure and speed up the process.

**03**

### **VALIDATE**

With our inline-compliance deliverables we enhance the reliability of system, resulting in fewer errors and less risk to process and data integrity, also minimizing the cost of maintenance and rework.

**04**

### **OPTIMIZE**

Customers can now optimize the entire value chain, from design and production to performance.

# OUR PANEL





Our in-house panel engineering team will assist you in every area of the design, test, and certification of your panels and work with you to develop the optimum solution. We manufacture wide range of electrical control panels. Some are as listed below -

- PLC panels.
- VFD panels.
- RIO panels.
- AI-Die cast panels.
- Junction boxes.
- Customized.
- Air purged control panels for hazardous locations.
- Pneumatic valve operation panels.
- Remote HMI/IPC panel with/without rotating mechanism.
- Fabricated Stainless steel & MS powder coated cabinets as per customized sizes.

# OUR PRODUCTS

---

“Precise Industrial Solutions” is the Authorized Channel Partner (System House) of Siemens Ltd. from since 2015 for Digital Factory / Process Industries & Drives.

Being partner we offer high delivery quality, thanks to reliable stock availability and efficient logistic processes. And, if necessary, our service team arrive quickly on site with all the necessary spare product.

With the wide product range from Siemens, we can provide product for all requirements while benefiting from maximum efficiency, flexibility, and cost effectiveness.



### SMART UPS

An uninterruptible DC power supply (DC UPS) with battery modules for bridging power failures in the order of hours. Cost-intensive downtimes and undefined system states can thus be avoided. Options for diagnostics and system integration. It has comprehensive functions, open communication via USB or Ethernet/PROFINET, and are fully integrated in Totally Integrated Automation (TIA).



### POWER SUPPLY

Siemens power supply, for customers with high technical requirements regarding reliability, efficiency and integration. It is suitable for industrial environment. The slim and excellent design of the SITOP combined with the push-in terminals means easy installation and wiring. The power supply units features a long service life and absolute reliability.



### ETHERNET SWITCHES

Managed or Unmanaged: SCALANCE X Industrial Ethernet Switches are specially developed for use in demanding environments. Siemens offers product lines for specific tasks, with different functional ranges: including support for common standards, such as PROFINET and EtherNet/IP.



## INDUSTRIAL PC'S

SIMATIC IPC products offer you a flexible, innovative platform with long-term availability that gives you a home field advantage when meeting the challenges of the digital factory for your machines and plants. IPC options for industrial server applications offer higher performance, availability, and data security.



## REMOTE CONNECTIVITY

Easy remote access for teleservice and remote maintenance: SINEMA Remote Connect lets you access remote plants or machines conveniently and securely, even if they're integrated into other networks. The connection to SINEMA Remote Connect can be established via wireless communication, DSL, or existing private network structures.



## PLC

SIMATIC controllers offer much more than powerful hardware for controlling machines and plants of all kinds. Through constant innovations, Siemens controllers enable innovative machine concepts – individually tailored to your automation system.



## HMI

SIMATIC HMI Panels are always the first choice when it comes to machine-oriented operation and monitoring. Equipment for monitoring and operator control is needed wherever people have to work with machinery and plant performing all kinds of tasks.



## VFD

Siemens VFD's are used in the industrial landscape for various applications. Interfaces and modules make the drives fit for digitalization. Coordinated components can be used both as a standard system and tailored to individual requirements.

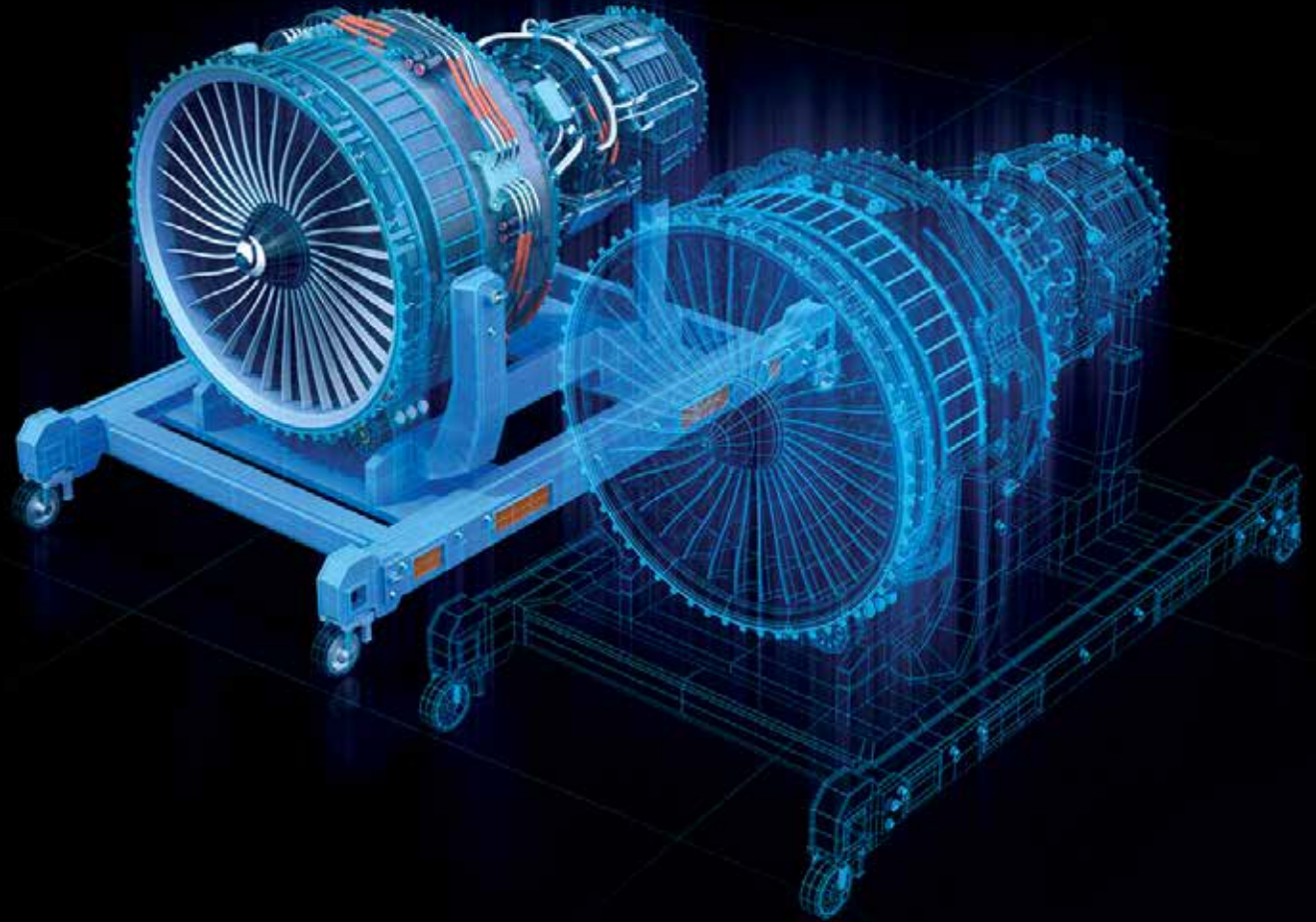


## SCADA

SIMATIC SCADA offers a solution that is ready for the challenges of today and tomorrow. It enables the manage and archive long-term the increasing volumes of data, and aggregate them into meaningful information

# DIGITAL TWIN

---



Digital twin – the virtual copy of the value chain on three level; product, production and performance – will become more and more important or even a must-have in numerous areas of OEM industry. Simulation & Virtual Commissioning leads to faster time-to-market, reduced error costs and risks..



In our **Siemens portfolio** we offer solution scenarios for virtual commissioning for all analysis stages.

**Digital Twin (@Product Level):**

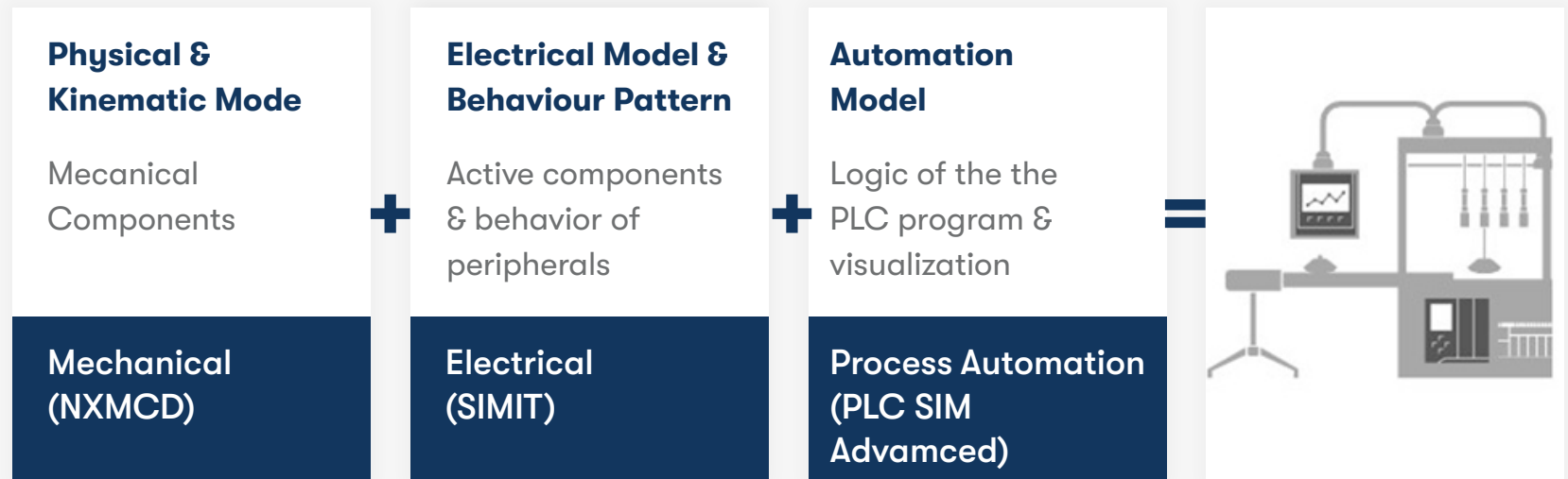
Siemens Controllers and HMI - Simulate and Validate product properties depending on the respective requirements, all in advance.

**Digital Twin (@Production Level):**

Production Machines to advance production lines - Sources of error or failure can be identified and prevented before actual operation begins in order to save time and cost involved.

**Digital Twin (@Performance Level) - IIOT:**

Insights of product, production data and energy consumption data from manufacturing systems are constantly monitored, which is then being analyzed in the cloud to perform predictive maintenance to prevent downtime and optimize energy consumption.



# IIOT

**Monitor state of machines, performance and efficiency of plant anytime anywhere.**



# RIGHT APP FOR EVERY CHALLENGE.....

Our expert team handles digital transformation projects, in which machine learning, artificial intelligence, interactive dashboards, reports, alerts are introduced for improving efficiency, reliability and making better decisions. Various applications options are available:

## 01. Cloud Apps:

Web based applications to access the data globally.



## 02. Edge Apps:

Applications to process the data locally near the machines.



## 03. Mobile Apps:

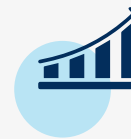
Applications designed for fast reactions and easy interactions.

Ready to start the digital transformation journey. We have ready solutions for you:



### PAMS (Precise Analysis & Maintenance Scheduling):

Perfect application for increasing plant productivity.



### EnPro (Precise Energy Monitoring):

An application to optimize energy expenditures.



### Appriser:

An application to inform and make aware about alert conditions.



### Digifact:

A webtool to digitalize factory.





10+

Years of  
Experience

45%

Productivity  
Increased

150+

Projects  
Undertaken

100+

Fortune  
Clients

# OUR CLIENTS



And Many More...

**115, 1<sup>st</sup> Floor, Hari Om Plaza, M.G. Road Borivali (E.), Mumbai - 400 066**

**KEEP IN TOUCH**

Connect Us: 022 28943214